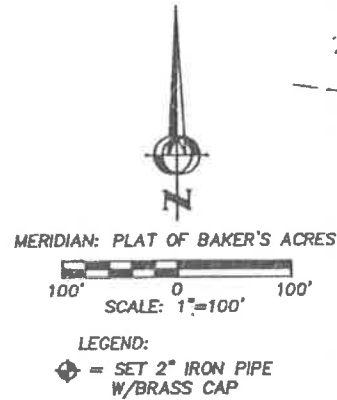


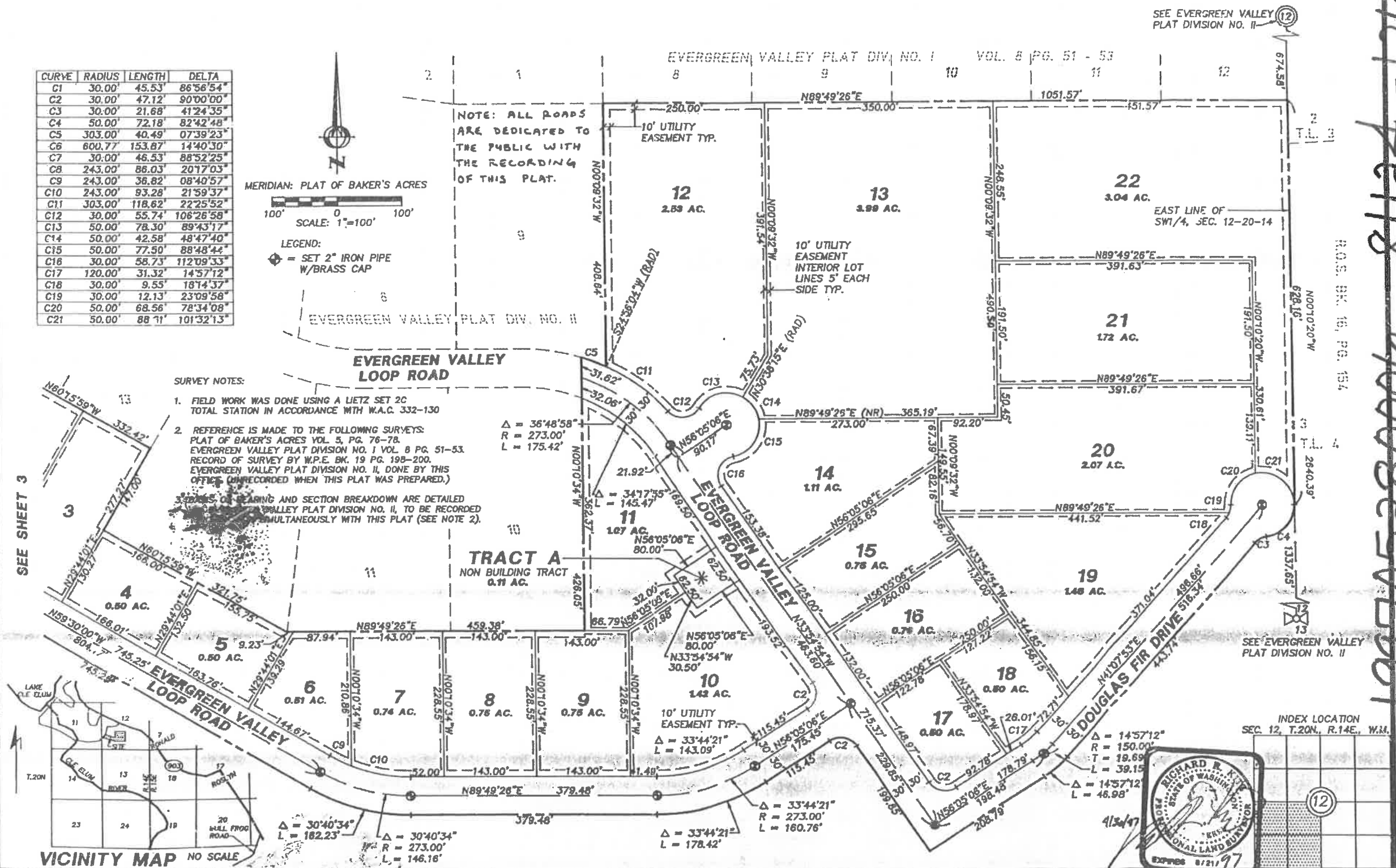
# EVERGREEN VALLEY PLAT, DIVISION NO. III

## A PORTION OF SECTION 12, T.20N., R.14E., W.M. KITTITAS COUNTY, WASHINGTON

CURVE	RADIUS	LENGTH	DELTA
C1	30.00'	45.53'	86°56'54"
C2	30.00'	47.12'	90°00'00"
C3	30.00'	21.68'	41°24'35"
C4	50.00'	72.18'	82°42'48"
C5	303.00'	40.49'	07°39'23"
C6	600.77'	153.87'	14°40'30"
C7	30.00'	46.53'	88°52'25"
C8	243.00'	86.03'	20°17'03"
C9	243.00'	36.82'	08°40'57"
C10	243.00'	83.28'	21°59'37"
C11	303.00'	118.62'	22°25'52"
C12	30.00'	55.74'	106°26'58"
C13	50.00'	78.30'	89°43'17"
C14	50.00'	42.58'	48°47'40"
C15	50.00'	77.50'	88°48'44"
C16	30.00'	58.73'	112°09'33"
C17	120.00'	31.32'	14°57'12"
C18	30.00'	9.55'	18°14'37"
C19	30.00'	12.13'	23°09'58"
C20	50.00'	68.56'	78°34'08"
C21	50.00'	88.11'	101°32'13"



NOTE: ALL ROADS ARE DEDICATED TO THE PUBLIC WITH THE RECORDING OF THIS PLAT.



**SURVEY NOTES:**

- FIELD WORK WAS DONE USING A LIETZ SET 2C TOTAL STATION IN ACCORDANCE WITH W.A.C. 332-130
- REFERENCE IS MADE TO THE FOLLOWING SURVEYS: PLAT OF BAKER'S ACRES VOL. 5, PG. 76-78. EVERGREEN VALLEY PLAT DIVISION NO. I VOL. 8 PG. 51-53. RECORD OF SURVEY BY W.P.E. BK. 19 PG. 198-200. EVERGREEN VALLEY PLAT DIVISION NO. II, DONE BY THIS OFFICE (UNRECORDED WHEN THIS PLAT WAS PREPARED.)
- BEARINGS AND SECTION BREAKDOWN ARE DETAILED IN EVERGREEN VALLEY PLAT DIVISION NO. II, TO BE RECORDED SIMULTANEOUSLY WITH THIS PLAT (SEE NOTE 2).

SEE SHEET 3

1997052800081124-120

AUDITOR'S CERTIFICATE 1997.05.18.000k  
 Filed for record this 18 day of May, 1997 at 1:33 P.M.  
 Volume... of Plats at page... at the request of  
 KITTITAS COUNTY BOARD OF COMMISSIONERS  
 Received by M. Allenbaugh County Auditor  
 By J. Stahl Deputy County Auditor

SURVEYOR'S CERTIFICATE  
 This map correctly represents a survey made by me or under my direction in conformance with the requirements of the Survey Recording Act at the request of PORT QUENDALL DEVELOPMENT  
 APR 18 1997  
 Certificate No. 16915

**EASTSIDE CONSULTANTS, INC.**  
 ENGINEERS - SURVEYORS  
 610 EAST FIRST ST.  
 CLU BLUM, WASHINGTON 99002  
 PHONE (509) 674-7488  
 FAX 674-7418

**EVERGREEN VALLEY PLAT DIVISION NO. III**

A PORTION OF SECTION 12, T.20N., R.14E., W.M.

DWN BY	DATE	JOB NO.
S. KITZ	4/97	94516
CHKD BY	SCALE	SHEET
R. KITZ	1"=100'	1 OF 3

